

# The Bay Condominium

Condo with the sea view, Right in the heart of Samui

Contact:	Alex(Eng/Thai)	081-582-9990
	Suzy(Eng/Thai)	099-396-2222
	Tee (Thai)	089-724-5555
	Office	077-310-626

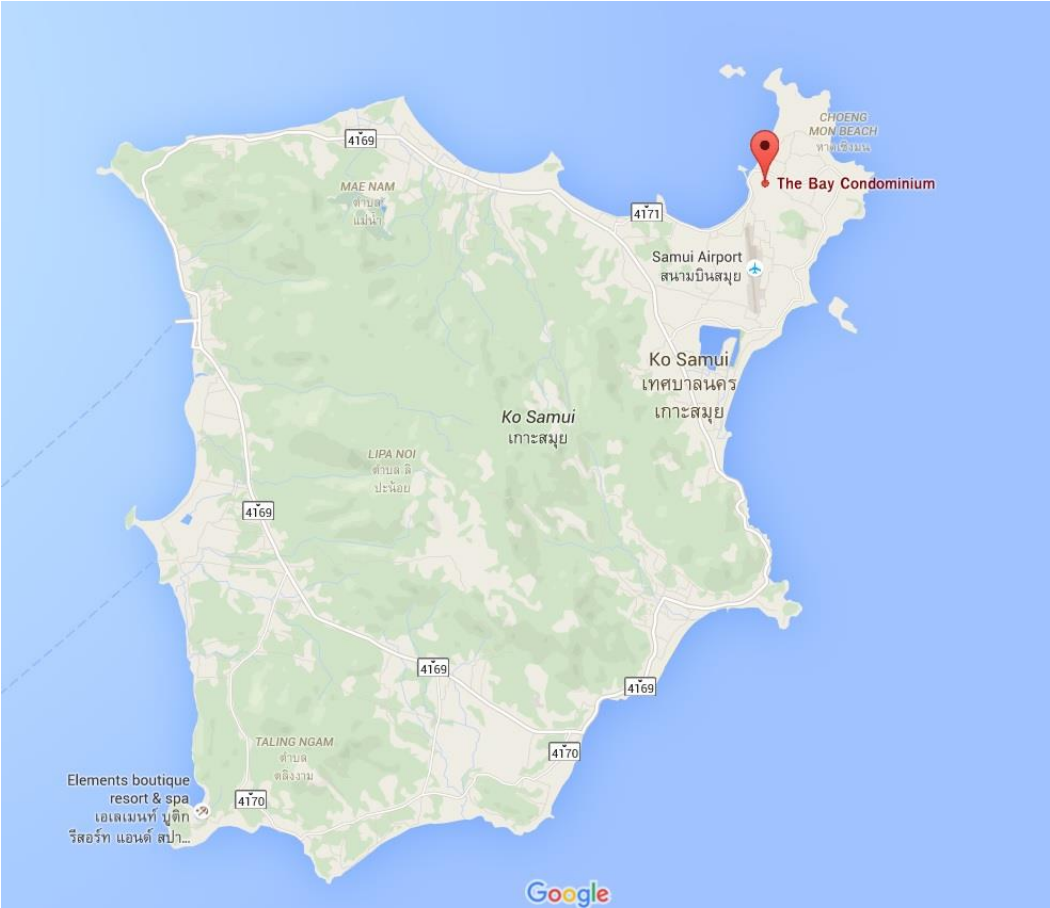


# Project Information

**Developer** : PCC Property Co.,LTD  
**Address** : 20/43 Moo 4, Bophut, Koh Samui, Suratthani 84320  
**Land Area** : 3-2-0 Rais  
**Project Type** : 3 Buildings – 3 Floors – 41 units  
**Room Type** : Studio, 1/2/3 bedrooms  
**Facilities** : Fitness, Swimming Pool, 24/7 Security, CCTV, Wifi, Coffee shop, 100% parking  
Chill out garden

**Fully Furnished / 5 Mins from Airport / Ready to move in**

# Location and Map



- 5 mins from Samui Airport
- 5 mins to Choeng Mon Beach
- 5-15 mins to Tesco, Big C, Hospital
- 15 mins to Central Festival, Chaweng
- Big Budha and Wat Pai laem view



# Sale Information Master Plan



LIST	DESCRIPTION	AREA
1	BUILDING A : อาคาร A	1,257,945 Sqm.
	GROUND FLOOR	329,615 Sqm.
	2nd FLOOR	416,645 Sqm.
	3rd FLOOR CORRIDOR & STAIR	426,685 Sqm. 85,000 Sqm.
2	BUILDING B : อาคาร B	1,401,025 Sqm.
	GROUND FLOOR	426,125 Sqm.
	2nd FLOOR	416,100 Sqm.
	3rd FLOOR CORRIDOR & STAIR	425,850 Sqm. 131,150 Sqm.
3	BUILDING C : อาคาร C	1,866,621 Sqm.
	GROUND FLOOR	532,535 Sqm.
	2nd FLOOR	542,588 Sqm.
	3rd FLOOR CORRIDOR & STAIR	565,578 Sqm. 225,920 Sqm.
4	SWIMMING POOL สระว่ายน้ำ	148.50 Sqm.
5	SWIMMING POOL DECK สระว่ายน้ำชั้นดาดฟ้า	220.00 Sqm.
6	OFFICE (UNDER BUILDING B) สำนักงาน (ใต้อาคาร B)	70.50 Sqm.
7	FITNESS CLUB (UNDER BUILDING B) ฟิตเนส (ใต้อาคาร B)	25.50 Sqm.
8	CONCRETE ROAD AND PARKING ถนนคอนกรีต และที่จอดรถ	1,929.50 Sqm.
9	GARDEN AND LANDSCAPE สวนและภูมิทัศน์	1,837,000 Sqm.

LIST	DESCRIPTION	AREA		
1	BUILDING A อาคาร A	1,257,945 Sqm.		
	GROUND FLOOR	A1-1 INTERIOR	122,165 Sqm. BALCONY 29,550 Sqm.	
		A1-2 INTERIOR	82,370 Sqm. BALCONY 20,900 Sqm.	
		A1-3 INTERIOR	81,260 Sqm. BALCONY 13,860 Sqm.	
		A2-1 INTERIOR	111,645 Sqm. BALCONY 30,750 Sqm.	
	2nd FLOOR	A2-2 INTERIOR	53,825 Sqm. BALCONY 10,200 Sqm.	
		A2-3 INTERIOR	53,925 Sqm. BALCONY 10,200 Sqm.	
		A2-4 INTERIOR	115,350 Sqm. BALCONY 30,210 Sqm.	
		A3-1 INTERIOR	168,185 Sqm. BALCONY 41,200 Sqm.	
	CORRIDOR & STAIR	A3-2 INTERIOR	175,150 Sqm. BALCONY 41,200 Sqm.	
	2	BUILDING B อาคาร B	1,401,025 Sqm.	
		GROUND FLOOR	B1-1 INTERIOR	116,800 Sqm. BALCONY 34,900 Sqm.
			B1-2 INTERIOR	54,150 Sqm. BALCONY 10,200 Sqm.
B1-3 INTERIOR			54,150 Sqm. BALCONY 10,200 Sqm.	
B1-4 INTERIOR			113,575 Sqm. BALCONY 33,350 Sqm.	
2nd FLOOR		B2-1 INTERIOR	111,500 Sqm. BALCONY 34,900 Sqm.	
		B2-2 INTERIOR	51,750 Sqm. BALCONY 10,200 Sqm.	
		B2-3 INTERIOR	51,750 Sqm. BALCONY 10,200 Sqm.	
		B2-4 INTERIOR	115,350 Sqm. BALCONY 33,350 Sqm.	
3rd FLOOR		B3-1 INTERIOR	175,350 Sqm. BALCONY 44,185 Sqm.	
CORRIDOR & STAIR		B3-2 INTERIOR	167,185 Sqm. BALCONY 44,650 Sqm.	
3		BUILDING C อาคาร C	1,866,621 Sqm.	
		GROUND FLOOR	C1-1 INTERIOR	102,1275 Sqm. BALCONY 44,600 Sqm.
	C1-2 INTERIOR		103,8800 Sqm. BALCONY 24,000 Sqm.	
	C1-3 INTERIOR		103,8800 Sqm. BALCONY 24,000 Sqm.	
	C1-4 INTERIOR		102,1275 Sqm. BALCONY 44,600 Sqm.	
	2nd FLOOR	C2-1 INTERIOR	102,7525 Sqm. BALCONY 32,800 Sqm.	
		C2-2 INTERIOR	103,8800 Sqm. BALCONY 32,000 Sqm.	
		C2-3 INTERIOR	103,8800 Sqm. BALCONY 32,000 Sqm.	
		C2-4 INTERIOR	102,7525 Sqm. BALCONY 32,800 Sqm.	
	3rd FLOOR	C3-1 INTERIOR	106,8525 Sqm. BALCONY 32,800 Sqm.	
	CORRIDOR & STAIR	C3-2 INTERIOR	111,8000 Sqm. BALCONY 32,000 Sqm.	
		C3-3 INTERIOR	111,8000 Sqm. BALCONY 32,000 Sqm.	
		C3-4 INTERIOR	106,8525 Sqm. BALCONY 32,800 Sqm.	
		225,920 Sqm.		



MASTER PLAN  
THE BAY KOH SAMUI  
CONDOMINIUM

# Sale Information

## Block A

1st Floor		Area (Sq.m.)	Room Type	Quota	Price
A 1-1	20/44	57.75	Studio	Foreigner	4,800,000 <small>From owner</small>
A 1-2	20/45	89.19	1 Bedroom	Thai	5,400,000 <small>From Developer</small>
A 1-3	20/46	100.59	1 Bedroom	Foreigner	SOLD
A 1-4	20/47	72.09	1 Bedroom	Foreigner	7,600,000 <small>From owner</small>

2nd Floor		Area (Sq.m.)	Room Type	Quota	Price
A 2-1	20/48	136.47	2 Bedroom	Foreigner	SOLD
A 2-2	20/49	63.93	Studio	Foreigner	SOLD
A 2-3	20/50	63.71	Studio	Foreigner	6,000,000 <small>From owner</small>
A 2-4	20/51	140.98	2 Bedroom	Thai	SOLD

3rd Floor		Area (Sq.m.)	Room Type	Price	Price
A 3-1	20/52	201.26	2 Bedroom	Foreigner	SOLD
A 3-2	20/53	62.88	Studio	Foreigner	SOLD
A 3-3	20/54	145.75	2 Bedroom	Foreigner	SOLD

# Sale Information

## Block A Floor Plan – 1<sup>st</sup> Floor



**อาคาร A**

**แปลนพื้นที่ล่าง**  
 ขนาดรอบ 1100  
**GROUND FLOOR PLAN**  
 SCALE 1:100

# Sale Information

## Block A Floor Plan – 2<sup>nd</sup> Floor



Resale  
from  
owner  
Foreigner  
Free Hold  
6 M Baht

**อาคาร A**

แบบพื้นที่ 2  
มาตราส่วน 1:100  
**SECOND FLOOR PLAN**  
SCALE 1:100

# Sale Information

## Block A Floor Plan – 3<sup>rd</sup> Floor



**อาคาร A**

**แผนพื้นที่ 3**  
 ขนาดส่วน 1:100  
**THIRD FLOOR PLAN**  
 SCALE 1:100



# Sale Information

## Block B

1st Floor		Area (Sq.m.)	Room Type	Quota	Price
B 1-1	20/55	80.33	1 Bedroom	Foreigner	SOLD
B 1-2	20/56	65.22	Studio	Foreigner	5,200,000 <small>From owner</small>
B 1-3	20/57	62.92	Studio	Thai	SOLD
B 1-4	20/58	62.67	Studio	Thai	SOLD
B 1-5	20/59	63.23	Studio	Thai	6,000,000 <small>From owner</small>
B 1-6	20/60	79.74	1 Bedroom	Foreigner	SOLD

2nd Floor		Area (Sq.m.)	Room Type	Quota	Price
B 2-1	20/61	143.39	2 Bedroom	Foreigner	SOLD
B 2-2	20/62	60.97	Studio	Foreigner	SOLD
B 2-3	20/63	60.86	Studio	Foreigner	SOLD
B 2-4	20/64	141.14	2 Bedroom	Thai	10,500,000 <small>From owner</small>

3rd Floor		Area (Sq.m.)	Room Type	Quota	Price
B 3-1	20/65	144.35	2 Bedroom	Foreigner	SOLD
B 3-2	20/66	63.14	Studio	Thai	SOLD
B 3-3	20/67	62.87	Studio	Thai	SOLD
B 3-4	20/68	149.12	2 Bedroom	Thai	SOLD

# Sale Information

## Block B Floor Plan – 1<sup>st</sup> Floor

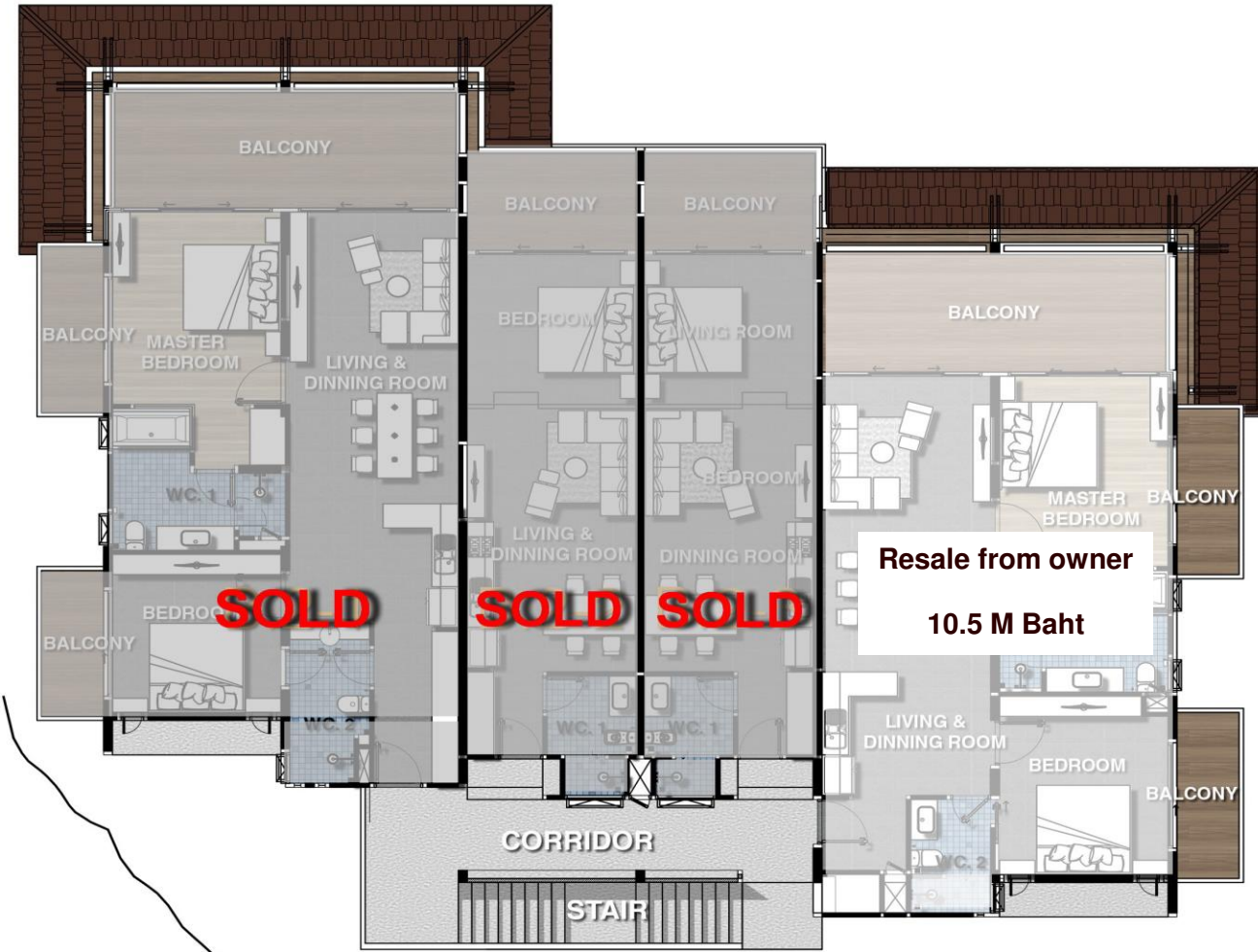


อาคาร B

แปลนพื้นที่ชั้นล่าง  
1:100  
GROUND FLOOR PLAN  
SCALE 1:100

# Sale Information

## Block B Floor Plan – 2<sup>nd</sup> Floor

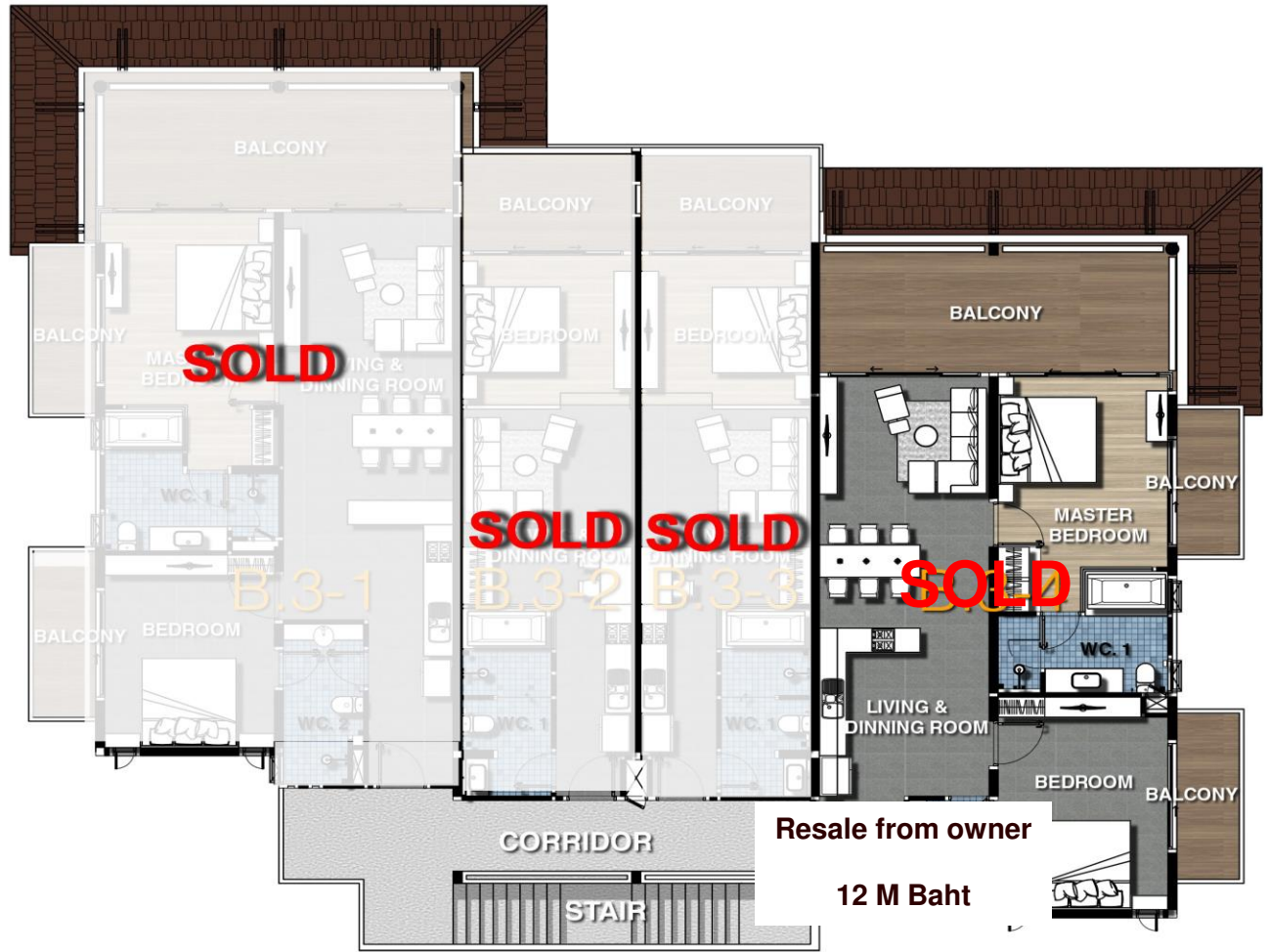


**อาคาร B**

แปลนพื้นที่ 2  
 มาตราส่วน 1:100  
**SECOND FLOOR PLAN**  
 SCALE 1:100

# Sale Information

## Block B Floor Plan – 3<sup>rd</sup> Floor



**อาคาร B**

**แผนผังชั้นที่ 3**  
 มาตรฐาน 1:100  
**THIRD FLOOR PLAN**  
 SCALE 1:100

# Sale Information

## Block C

1st Floor		Area (Sq.m.)	Room Type	Quota	Price
C 1-1	20/69	125	2 Bedroom	Thai	SOLD
C 1-2	20/70	95.09	4 Bedroom	Thai	12,900,000 From Developer
C 1-3	20/71	95.06			
C 1-4	20/72	95.15	2 Bedroom	Thai	SOLD
C 1-5	20/73	95	1 Bedroom	Thai	SOLD
C 1-6	20/74	124.75	2 Bedroom	Foreigner	SOLD

2nd Floor		Area (Sq.m.)	Room Type	Quota	Price
C 2-1	20/75	101.38	1 Bedroom	Foreigner	SOLD
C 2-2	20/76	81.2	1 Bedroom	Thai	SOLD
C 2-3	20/77	83.18	1 Bedroom	Thai	SOLD
C 2-4	20/78	83.18	1 Bedroom	Thai	6,000,000 From owner
C 2-5	20/79	82.83	1 Bedroom	Thai	SOLD
C 2-6	20/80	101.33	2 Bedroom	Foreigner	SOLD

3rd Floor		Area (Sq.m.)	Room Type	Quota	Price
C 3-1	20/81	138.19	2 Bedroom	Thai	SOLD
C 3-2	20/82	142.57	2 Bedroom	Thai	SOLD
C 3-3	20/83	142.57	2 Bedroom	Thai	SOLD
C 3-4	20/84	138.19	2 Bedroom	Foreigner	SOLD

# Sale Information

## Block C Floor Plan – 1<sup>st</sup> Floor



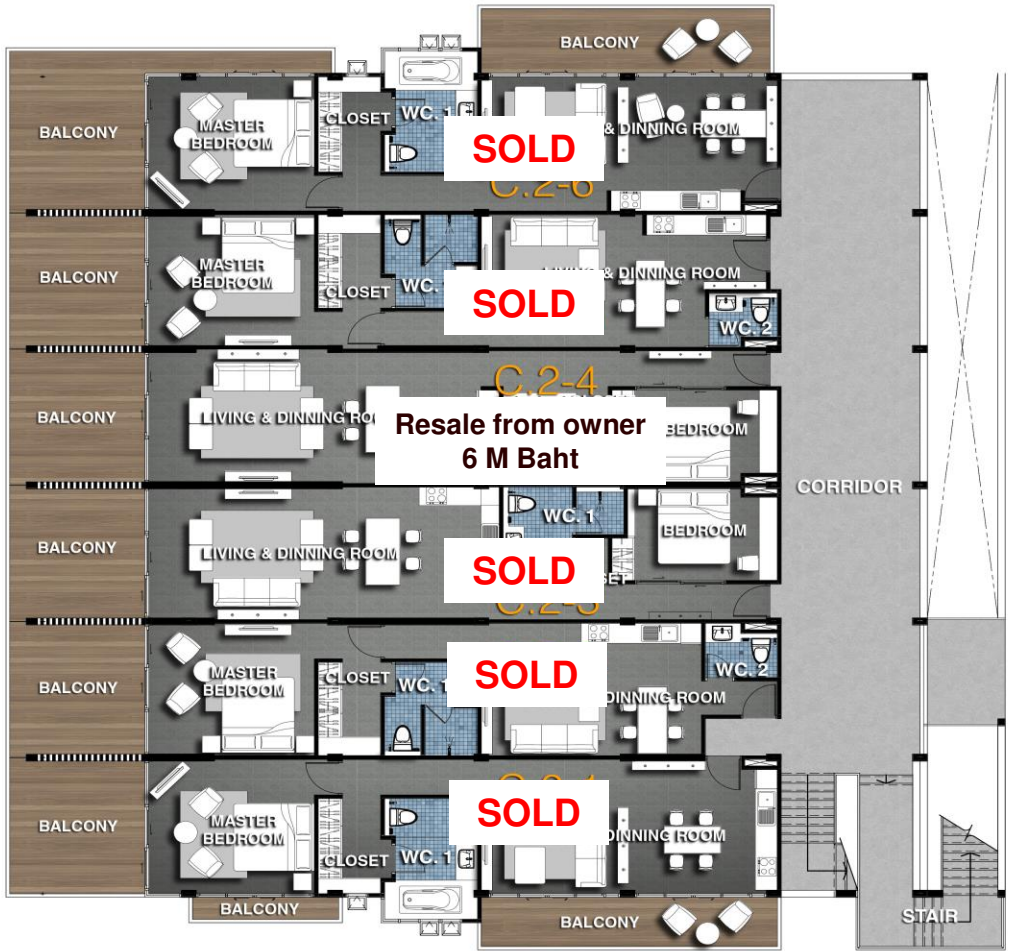
From Developer  
12.9 M Baht

อาคาร C

แบบพื้นที่ล่าง  
1:125  
GROUND FLOOR PLAN  
SCALE 1:125

# Sale Information

## Block C Floor Plan – 2<sup>nd</sup> Floor



อาคาร C

แบบพื้นที่ 2  
 1:125  
 SECOND FLOOR PLAN  
 SCALE 1:125

# Sale Information

## Block C Floor Plan – 3<sup>rd</sup> Floor



อาคาร C

แผนผังชั้น 3  
 1:125  
 THIRD FLOOR PLAN  
 SCALE 1:125



# Pictures



# Pictures



# Pictures



# Contact us

- Phone :
  - Alex (Thai/Eng) 081-582-9990
  - Suzy(Thai/Eng) 099-396-2222
  - Tee (Thai) 089-724-5555
  - Office 077-310-626
- Website : [www.thebaykohsamui.com](http://www.thebaykohsamui.com)
- Photos :  
<https://drive.google.com/drive/folders/180AGqevxexP1xbzyAnVnMmduzEKn1At6?usp=sharing>
- Facebook: <https://www.facebook.com/thebaysamui/>
- Address : 20/43 Moo 4 Bophut, Koh Samui,  
Suratthani 84320